

CLOSE TO EVERYTHING... FAR FROM ORDINARY

New Construction Upscale Apartments Now Leasing for Fall, 2012



FOR LEASING INFORMATION, PLEASE CALL OR E-MAIL
(205) 469-0106
Bama@chance-partners.com

Boulevard Lofts and the Townhomes at Metalworks are Tuscaloosa's newest student rental opportunity. Located in the heart of Downtown Tuscaloosa, they offer the utmost in convenient locations and upscale living. Both complexes will be available for occupancy August 15, 2012. Please contact us to become a part of these unique new developments!

Developed By



Leased and Managed By

PROGRESSIVE
PROPERTIES
MANAGEMENT

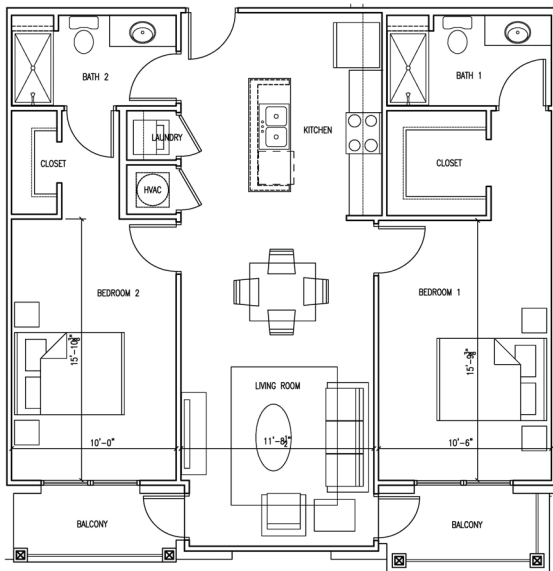
SEE BACK FOR MORE DETAILS

Boulevard Lofts



- New construction in the heart of Downtown Tuscaloosa
- One, two, and three bedroom floorplans ranging from 702 to 1,444 square feet approximately
- Private bathrooms for each bedroom
- Oversized living area
- Stainless steel appliances
- Granite countertops
- Washer and Dryer installed
- On-Site Parking
- Close to downtown entertainment district and UA campus
- Hardwood-style flooring
- Huge balconies overlooking downtown
- See Boulevardbama.com for more information

SAMPLE FLOORPLAN (2 Bedrooms)



Square Footages

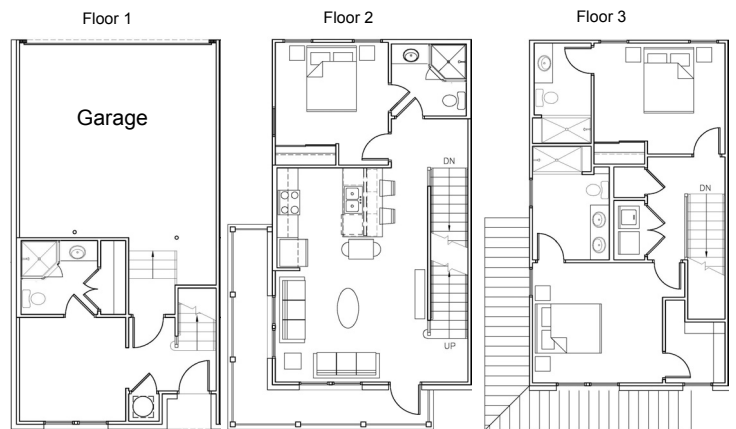
Bedroom 1: 10'6" x 15'10" • Bedroom 2: 10' x 15'11" • Living Area: 11'8.5" x 15'11"

The Townhomes at Metalworks



- New construction in the heart of Downtown Tuscaloosa
- Each unit contains three bedrooms, extra den with full bath and closet, and contains 1,700 square feet approximately
- Private bathrooms for each bedroom
- Two-car garage in each unit and on-site parking
- Oversized living area
- Extra den with full bath and closet
- Stainless steel appliances
- Granite countertops
- Washer and Dryer installed
- Close to downtown entertainment district and UA campus
- Hardwood-style flooring
- Huge balconies
- See Metalworksbama.com for more information

SAMPLE FLOORPLAN



Square Footages

Bedroom Down: 11'3" x 12'8" • Bedroom Up, Back: 13' x 11'2" • Bedroom Up, Front: 15' x 12'
Den: 10'4" x 10' • Living Area: 15' x 11'2"