

# 2700

# CAPITOL PARK

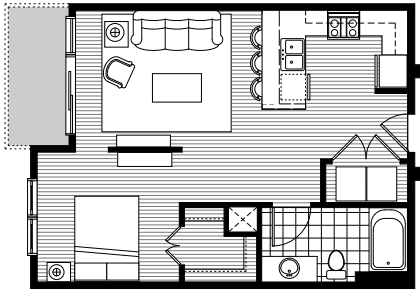
LIVING IN A VIBRANT ENVIRONMENT

2700 Capitol Park combines thoroughly modern style with **THE BEST** of urban living.

2700 Capitol Park is THE address for EXCEPTIONAL boutique loft living in downtown Tuscaloosa. We offer beautifully appointed studios, one and two bedroom floor plans featuring unique details and generous living spaces. Features include:

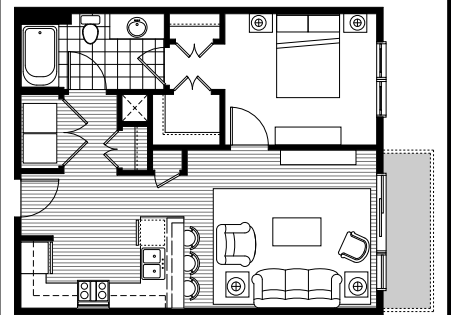
- 9 ft, 10 ft, & 12 ft ceilings are available
- Granite Countertops & Stainless Steel Appliances
- Washer/Dryer included in Each Loft
- Walkout Balcony or Juliette Balcony
- Large Walk-in Closets
- Designer Lighting
- State of the Art Gym with Yoga/Pilates Studio
- Two Social Areas with Wi-Fi and Flat Screen TV's
- Saltwater Infinity Pool with Outdoor Fireplace & Grilling Area
- Private Parking Deck with Assigned Parking
- Smoke-free Controlled Access Building with 3 Elevators

## THE PARK



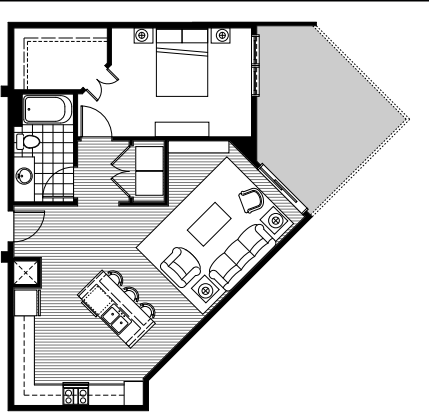
STUDIO LOFT: 635-670 sq.ft.

## THE AVENUE



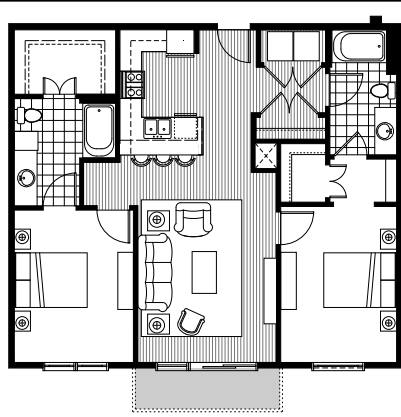
ONE BEDROOM: 700-760 sq.ft.

## THE MAIN



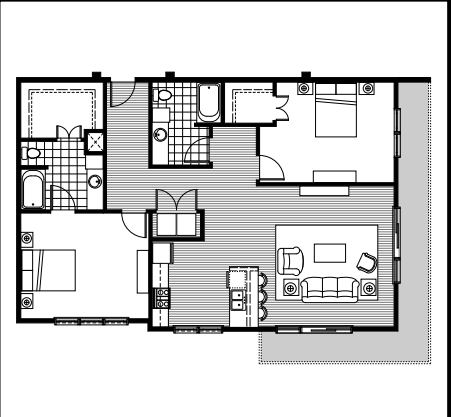
ONE BEDROOM: 855 sq.ft.

## THE BOULEVARD



TWO BEDROOM: 1,055-1,130 sq.ft.

## THE CAPITOL



TWO BEDROOM: 1,215-1,430 sq.ft.

*The floor plans depicted provide general dimensions for your reference, however the unique character of the building makes each loft slightly different in size.*

2700 University Boulevard | Tuscaloosa, AL 35401 | 205.752.2700 | live@2700capitolpark.com  
[www.2700capitolpark.com](http://www.2700capitolpark.com)



Located in the heart of downtown Tuscaloosa, 2700 Capitol Park is the ideal location for a life less ordinary.

Bordered by historic Capitol Park, the Tuscaloosa Amphitheater and within walking distance to the lively and energetic downtown, you'll feel right at home in Tuscaloosa's urban city center. City parks, museums, and entertainment venues are just a stroll or bike ride away.

- ★ 2700 Capitol Park
- ♪ Tuscaloosa Amphitheater
- 🎭 Bama Theatre
- 📰 Tuscaloosa News
- Dining & Nightlife
- Shopping & Attractions

It's not just where you want to live...

# it's how you want to live!

Tuscaloosa Amphitheater: in your backyard | Restaurants, Nightlife & Shopping: steps away  
Capitol Park: out your front door | RiverWalk: 5 minute walk | Bryant Denny Stadium: 1.5 miles  
DCH hospital: 3 miles | Mercedes Benz Plant: 20 minutes



**GET ON THE LIST:** [2700capitolpark.com](http://2700capitolpark.com) | 205.752.2700

**SEALY**  
MANAGEMENT CO., INC.



2700 University Boulevard | Tuscaloosa, Alabama 35401

# 2700

## CAPITOL PARK

